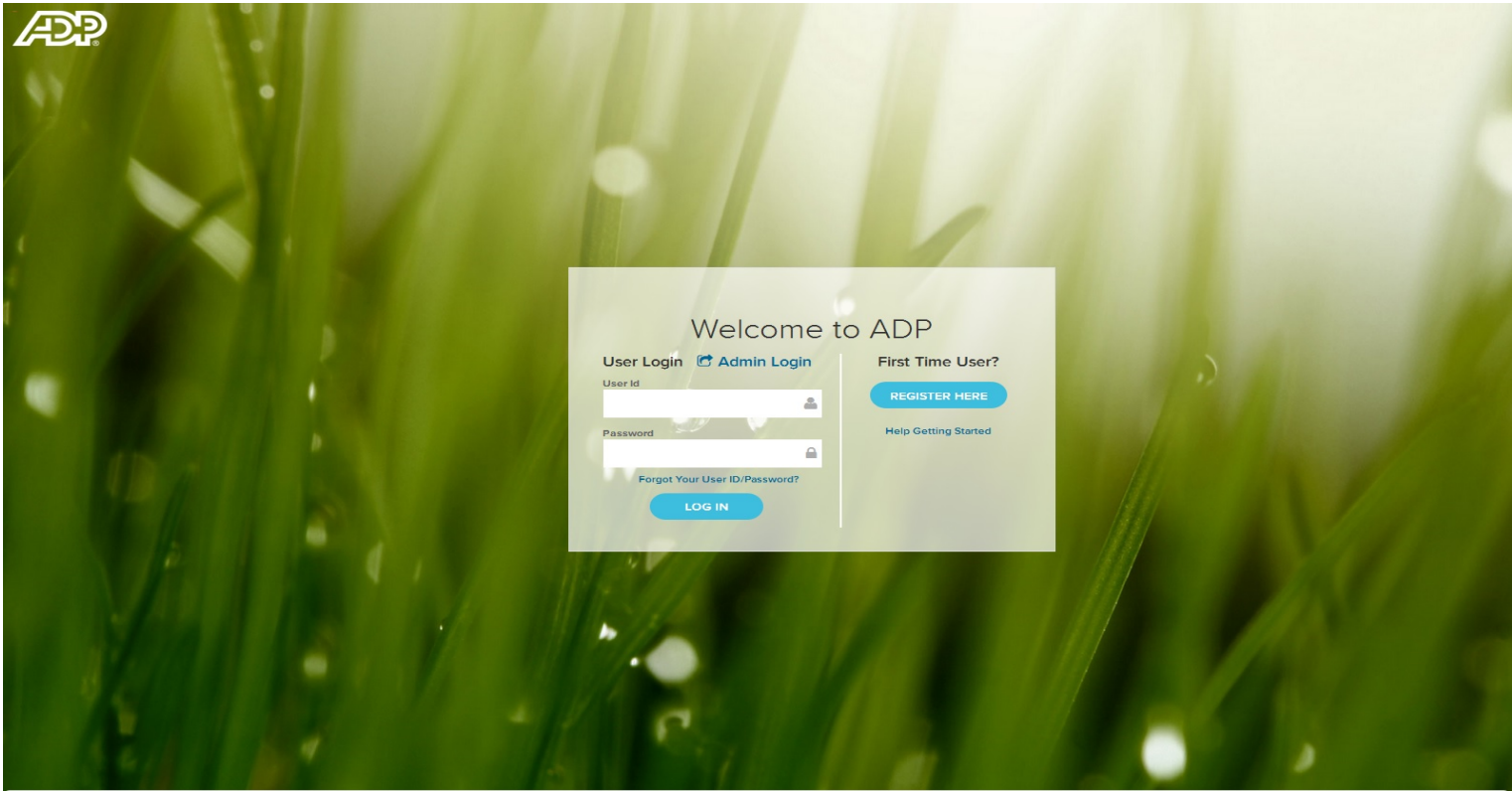
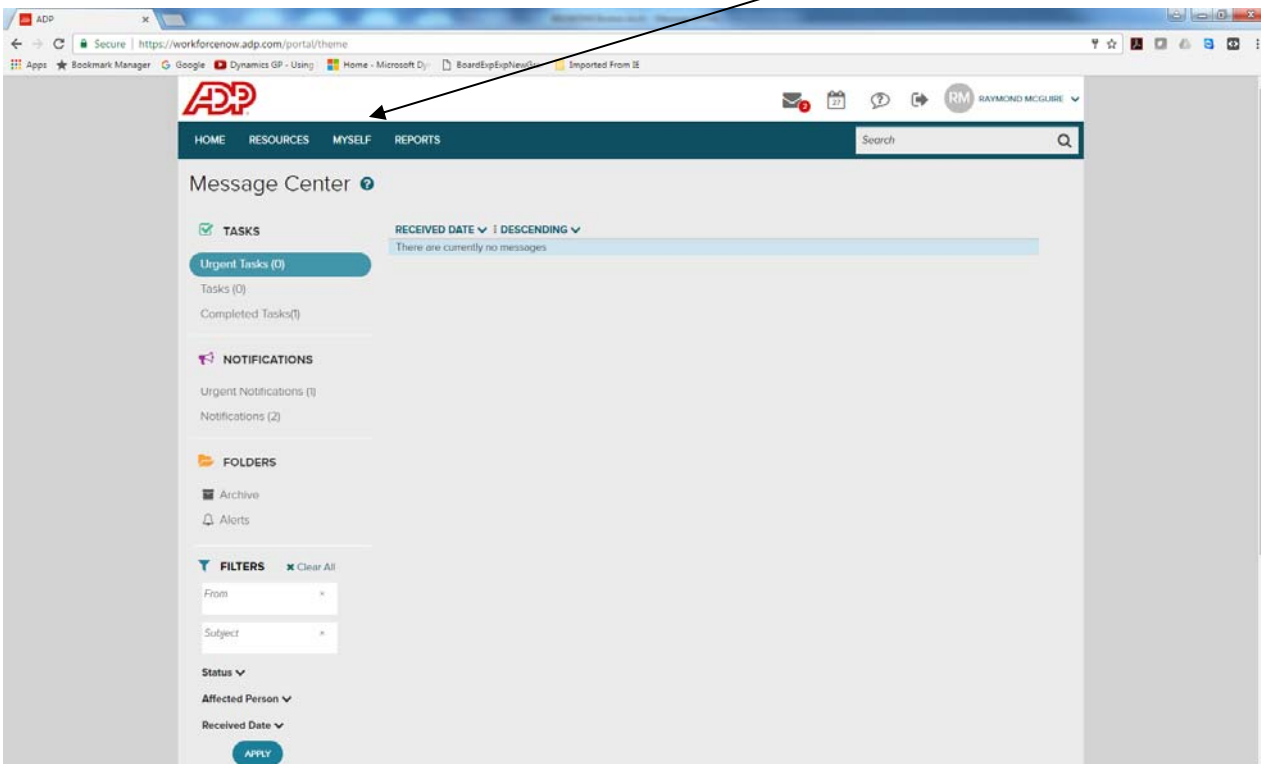


Getting to and using the New ADP Portal After the 2-25-17 ADP System Upgrade

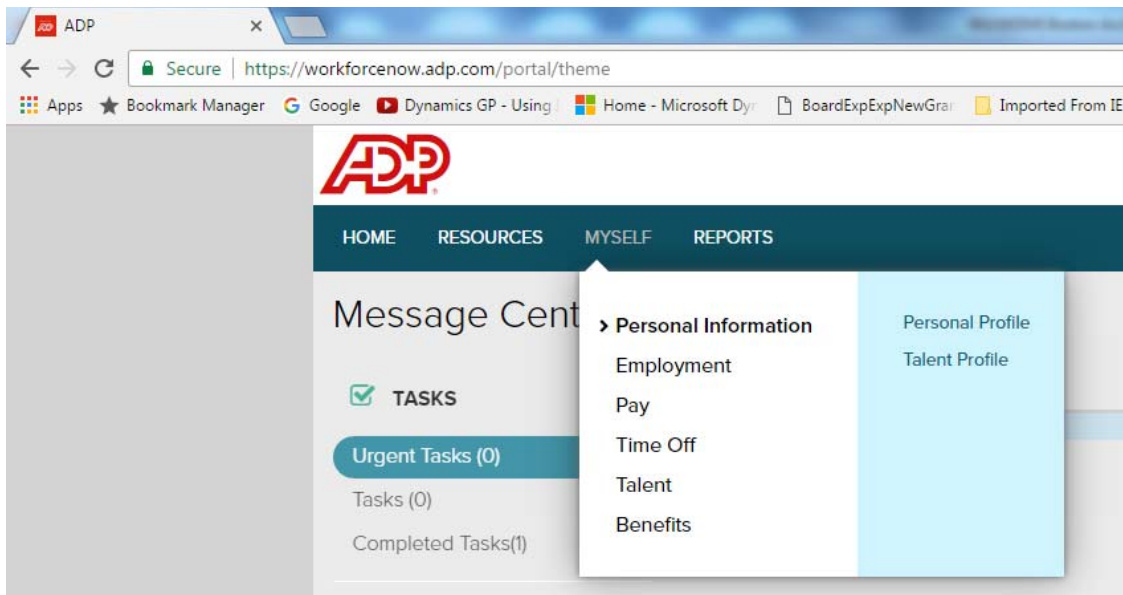
1. Go to the new site link <https://workforcenow.adp.com>
2. Use your active username and password used on the old site.



After logging in you will get this screen select the tab named "MYSELF"



After you select “Myself”, you will get a drop down menu which looks like this.



To see your pay statements, select “Pay” and you can select the respective check.