



Portfolio Guide

BOSTON
ARCHITECTURAL
COLLEGE

SINCE 1889

Key Components

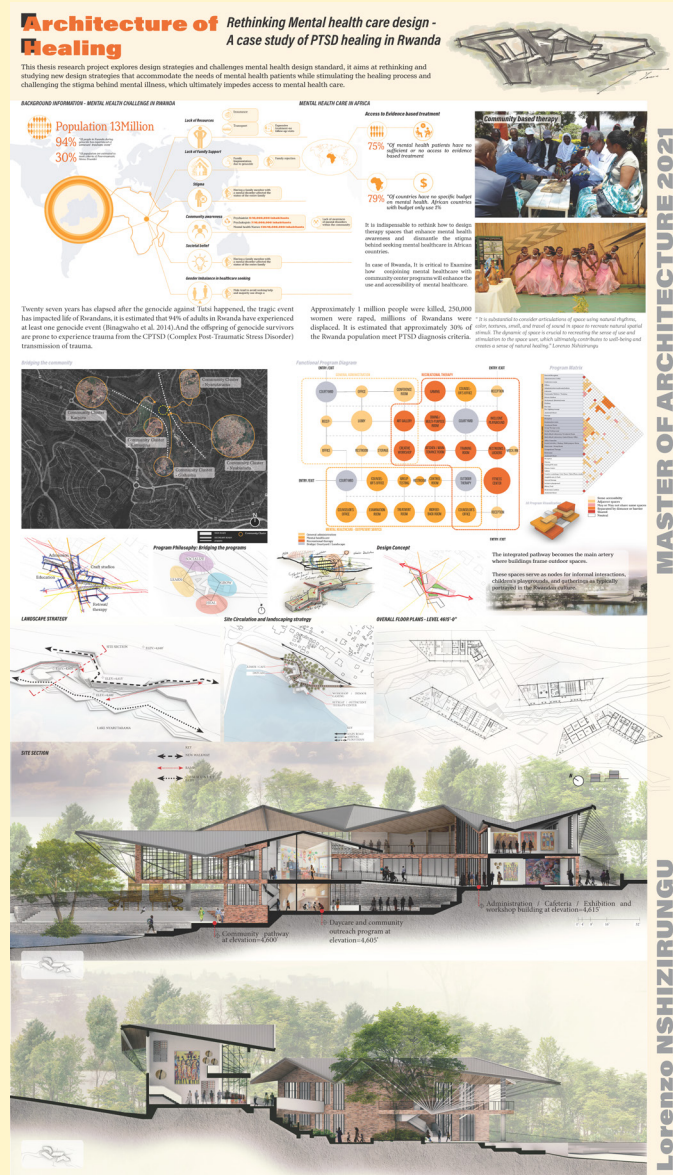
Your portfolio is one of the most important parts of your application. It gives us a clear sense of how you think, design, and communicate ideas.

Include a selection of your strongest work across academic, professional, and personal projects. We're not just looking for polished final pieces, we also want to see your process. Sketches, diagrams, physical models, and iterations help us understand how your ideas develop towards your final execution.

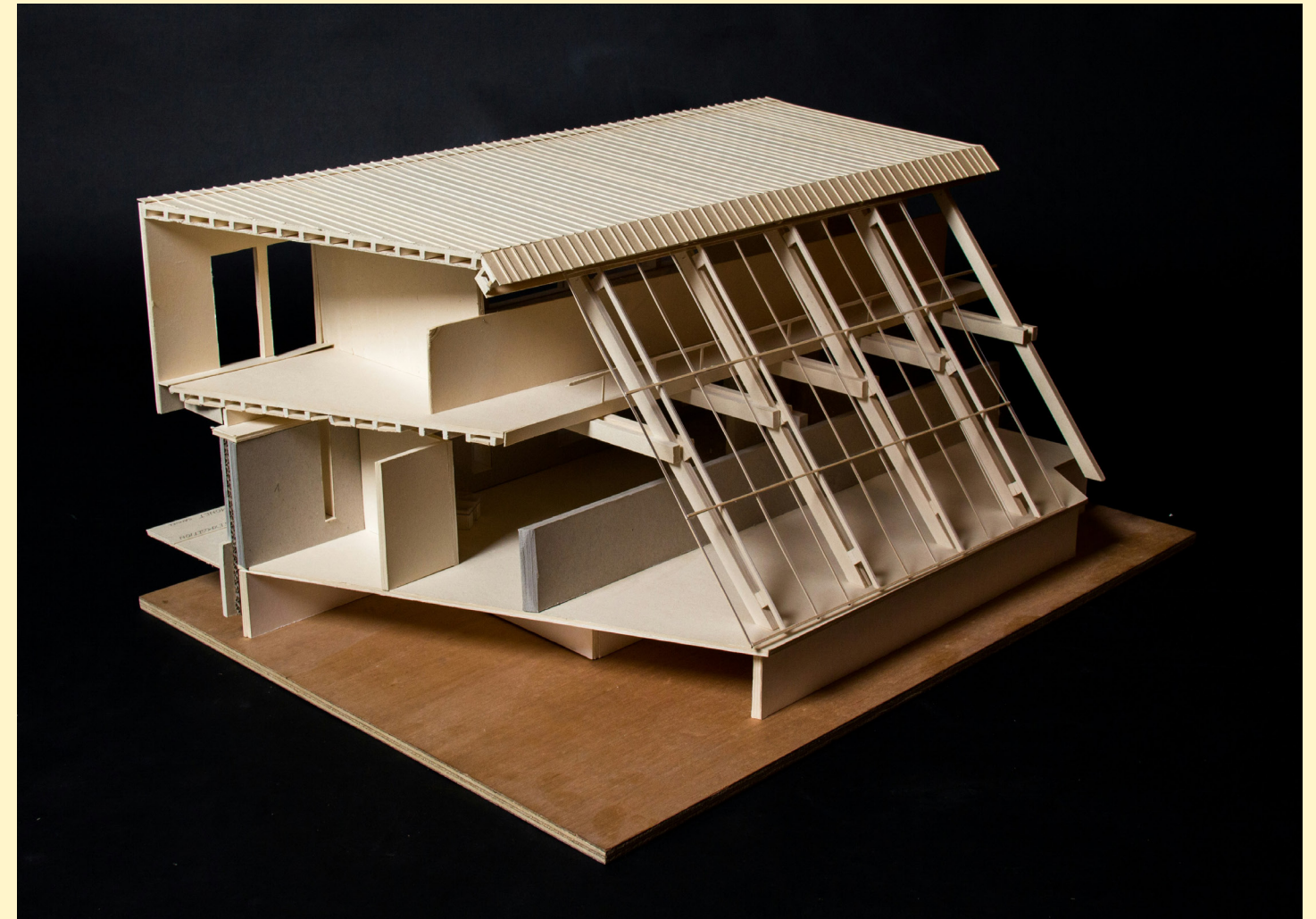
Show range where you can: types of projects, media, and any collaborative work. Clear presentation and thoughtful documentation go a long way.

Your portfolio helps us evaluate your preparation and experience of key design skills whether gained through your undergraduate education or professional experience.

Your portfolio will be evaluated by our design faculty and transfer committee along with your résumé, transcript, and prior course descriptions.



Lorenzo Nshizirungu, M. Arch



Basic Systems Thinking

Designs with awareness of people within a broader context of ideas, needs, cultures, histories, and systems.

Design Process

Approaches design as a thoughtful process. Defining problems, developing solutions, and critically evaluating outcomes.

Representation

Communicates ideas effectively through drawing, drafting, modeling, digital media, and writing, with strong attention to craft.

Concept Development

Develops and expresses clear, compelling ideas informed by both design disciplines and external influences.

Site & Context Analysis

Analyzes and documents environmental, cultural, historical, and qualitative factors that shape a site.

Concept to Form

Demonstrates rigorous exploration that translates ideas and context into resolved design outcomes.

Human Scale & Experience

Designs spaces with attention to human scale, movement, and use. Showing curiosity about how people interact with the built environment.

Form & Space

Communicates 3D form and space, with an understanding of how systems organize spatial and formal relationships.

What's working here?

This student's professional project clearly states their role within the group and the work that they were responsible for as well as their design team.

This helps our faculty determine their skills when looking at the work shown.

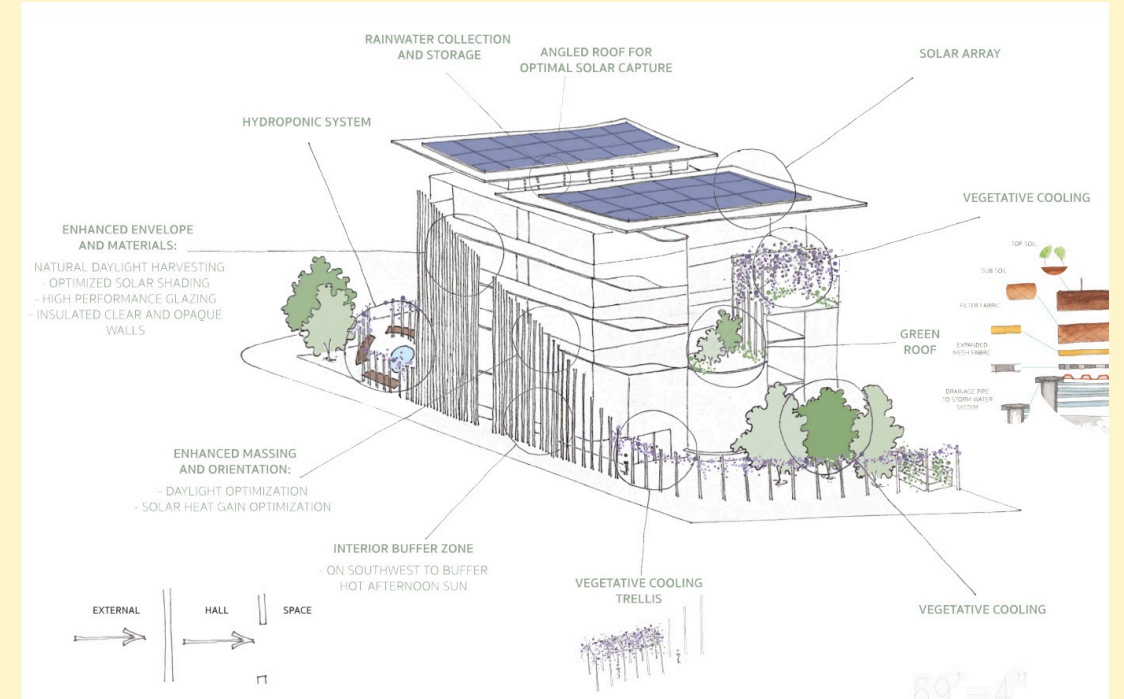
CALLICOON LANDSCAPE

Location: Callicoon, NY
 Project Status: Started 2022, DD Completed 2022
 Scope: Landscape Design
 Architect: Blejer Architecture
 Project Team: _____

Role: Junior Designer through SD, DD

- Site Analysis
- SD phase sketches and design proposals
- DD phase renderings, drawings, and client presentations

This student states the reason behind their design thinking.



CONTENTS

1.00: STUDIO COURSE 03

ARH 609: Intermediate Design Studio 104

ARH 608: Advanced Design Studio Concept Context and Topology30

ARH 619: Advanced Design Studio III50

3.00: SYSTEMS AND TECHNOLOGY .93

ARH 602: Structures 94

ARH 604: Materials and Method of Construction 96

Saw Swee Hock student centre at London School of Economics 96

Institute for Data Science at university of Rochester 96

2.00: MEDIA AND PROCESS 67

ARH 651: Design Process and 2D Media68

ARH 654: Design Process and 3D Media76

ARH 620: Digitally Generated Morphology82

This student's table of contents is legible and clearly shows which projects correspond with the courses on their transcript.

MONTESSORI CHILDREN'S MUSEUM

The embodiment of Montessori principles of scale, exploration and unity with nature create a place which both blends seamlessly with the site to ground the experience and allows for a journey of observation, analysis and creativity.

"THE CHILD IS BOTH A HOPE AND A PROMISE FOR MANKIND" - DR. MARIA MONTESSORI